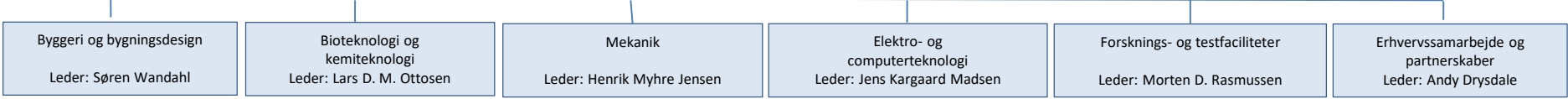


Institut for Ingeniørvidenskab
 Institutleder: Thomas S. Toftegaard
 Viceinstitutleder: Morten Dam Rasmussen
 Viceinstitutleder: Jens Kargaard Madsen

Sekretariat
Lilian van der Bijl



Computational Methods in Civil Engineering

Construction Management

(Day)Lighting Design

Fluid Dynamics and Building Ventilation

Geotechnical Engineering

Indoor Climate and Energy

Socio-Technology Design

Structural and Concrete Analysis

Structural Dynamics and Monitoring

Tectonics

Applied Surface Chemistry

Air Quality Engineering

Biomechanics and Mechanobiology

Biorefining

Cell Engineering

Flow Chemistry Research

Immunological Biotechnology

Lipid Biotechnology and Engineering

Anaerob Digestion Technologies

Molecular Engineering

Nanofiber technology and cellular engineering

Plastic and Polymer Engineering

Computational and Non-linear Dynamics

Fatigue

Finite Element Modelling

Fluid Mechanics

Machine Design

Mechanical Metamaterials and Soft Matter

Mechanics of Interfaces and Adhesion

Mechanics of Materials

Nano Engineering

Renewable Energy and Thermodynamics

Robotics

Surface Mechanics

Sustainable Energy Systems

Vehicle and Multibody System Dynamics

Wind Energy and Turbulence

Biomedical Engineering

Communications Systems

Integrated Electronics

Operations Management

Pervasive Systems

Photonics

Signal Processing

Software Engineering

Forsøgsbiogasanlæg

Forskningsudvalg: Thomas S. Toftegaard

Myndighedsbetjeningsudvalg: Tavs Nyord

Ph.d.-udvalg: Stefan Hallerstedte

Arbejds miljøudvalg: Morten D. Rasmussen

Samarbejdsudvalg: Thomas S. Toftegaard

Institutforum: Thomas S. Toftegaard

Uddannelsesudvalg: Maibritt Hjorth

Erhvervsudvalg: Peter Harling Lykke